



Snag-resistant and pill-resistant with a matte finish, this feminine double-knit jacket keeps moisture under control and allows maximum movement. The three-panel hood with drawcord and toggles offers year-round versatility.

- 7.1-ounce, 100% polyester
- Taped neck
- Raglan sleeves
- Open cuffs and hem
- Thumbholes to keep hands warm
- Front pockets
- Left sleeve zippered pocket

*\*Due to the nature of 100% polyester performance fabrics, special care must be taken throughout the screen printing process.*

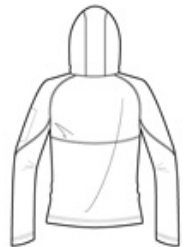
*\*Please note: This product is transitioning from woven labels to tag-free labels. Your order may contain a combination of both labels*

**CARE INSTRUCTIONS**

Machine wash color, like colors only, non-chlorine bleach, tumble dry low, remove promptly.



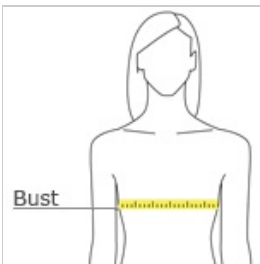
front



back

[Tips For Effectively Screen Printing Polyester Fabrics](#)

**HOW TO MEASURE**


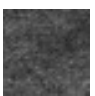





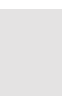


**BUST**  
Measure under the arm and around the fullest part of the bust with arms down, keeping tape horizontal.

**SIZE CHART**

	XS	S	M	L	XL	XXL	3XL	4XL
Size	2	4/6	8/10	12/14	16/18	20/22	24/26	28/30
Bust	32-34	35-36	37-38	39-41	42-44	45-47	48-51	52-55

**COLOR INFORMATION**

							
Black PMS NTR BLACK C	Graphite Heather PMS COOL GRAY 10C 11C	Grey Heather PMS COOL GRAY	Pink Raspberry PMS 7425C	True Navy PMS 533C	True Red PMS 200C	True Royal PMS 7686C	White